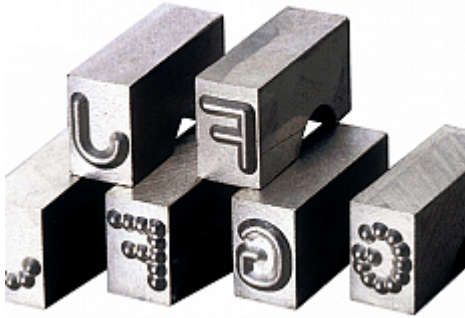


## Low Stress Steel Type



Steel Type for use in applications which dictate that lower stress levels are introduced into the component being marked. This is usually a requirement for Aerospace, Nuclear, Oil and Gas installations and some M.O.D. work.

2 Styles of Lowstress engraving available

Ministress - round faced character which gives a continuous line character when marked.

Dotstress - for even greater reduced stress levels, a character with similar nose formation to Ministress but with the added benefit of impressing the character in dot formation.

Available in:-

- 2 Character heights
- Packs of individual characters
- Set of 26 characters A-Z
- Set of 10 characters 0-9
- Set of 100 alpha-numeric and punctuation characters according to the most common use plus spacer pieces for non-marking positions and Hand Holder

Steel Type Holders to work with are available to purchase seperately

### Overview

Making a mark with Steel Type Sets saves time - in just one stroke, a series of letters and figures can be indented with uniform legibility.

The basis of Lowstress marking type is that the character crown, instead of being sharp faced, is rounded to give a 'softer' impression into the component. This helps to eliminate any stress concentration at the bottom of the indent.

Nickel plated pieces with uniformity of character position and depth from one piece to another allows a quick, straight, consistent quality mark to be made on a range of materials including metal and plastic up to a maximum hardness of 37 Rockwell C

The Hand Holder comes complete with Allen key to secure the Steel Type in place. Simply adjust the grub screw for quick inscription change Steel Type Holders to work with are available to purchase seperately, check the Holder Compatibility & Capacity Chart in Technical Data for options available.

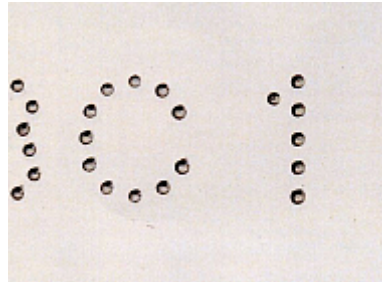
Manufactured under stringent BS EN ISO 9001:2008 quality controls and exacting standards.

Safety note: As with all striking tools, we recommend the use of appropriate safety protection. Safety glasses and gloves should we worn at all times

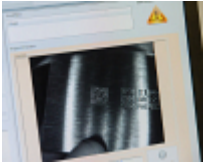
- Produced from the best steel grades for long life.
- Precision ground blanks to give clear marks of consistent depth.
- Hardened and tempered to precise limits to ensure consistency, durability and safety in use.
- Type Holders designed to provide accurate Type location and positive locking.
- Nickel plated finish to resist rust and offer a good quality appearance.

### Our Solutions

- Traceability Software & Data Capture
- Automated Part Marking
- Aerospace Marking Standards
- Automotive VIN Marking
- Hand Tools for Marking & Identification
- Serial Number Marking
- Logo Marking
- Production Data Monitoring



## Products and Solutions available from Pryor



Traceability Software &  
Data Capture



Automated Part  
Marking



Aerospace Marking  
Standards



Automotive VIN  
Marking



Hand Tools for Marking  
& Identification



Serial Number  
Marking



Logo Marking



Production Data  
Monitoring