

## T-slotted Table



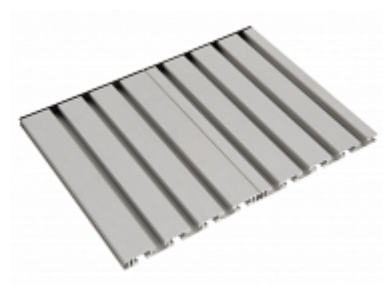
Pryor supplies a General Purpose T-slotted table and a Heavy Duty T-slotted table for securing your workpiece when marking. These accessories are ideal for use on a BenchDot, a BenchDot Deep Pneumatic, or a BenchScribe.

- Prevent unwanted and accidental movement of components when marking
- Allows for accurate marking of more complex shaped components
- Easier to secure workpieces

### Overview

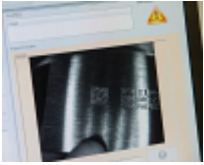
Pryor supplies a Heavy Duty T-slotted table and a General Purpose T-slotted table. The Heavy Duty T-slotted table is able to support heavier loads and is generally also the more durable option. The General Purpose T-slotted table is made from extruded aluminium. It has more t-slots to enable you to secure your components in different positions.

- Provides easier clamping of workpieces for marking
- 2 different options to meet your application requirements



- Traceability Software & Data Capture
- Automated Part Marking
- Aerospace Marking Standards
- Automotive VIN Marking
- Hand Tools for Marking & Identification
- Serial Number Marking
- Logo Marking
- Production Data Monitoring

## Products and Solutions available from Pryor



Traceability Software &  
Data Capture



Automated Part  
Marking



Aerospace Marking  
Standards



Automotive VIN  
Marking



Hand Tools for Marking  
& Identification



Serial Number  
Marking



Logo Marking



Production Data  
Monitoring