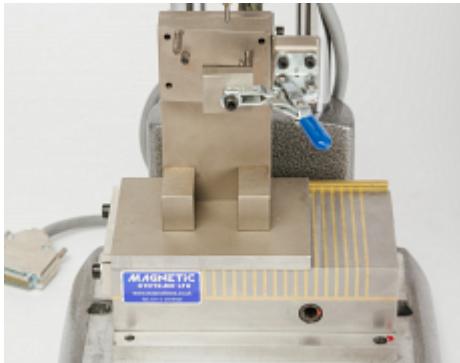


Magnetic Fixture



Secure your workpiece with a magnetic fixture to prevent any movement when marking.

- Ensure high quality, legible marks
- Prevent unwanted or accidental workpiece movement

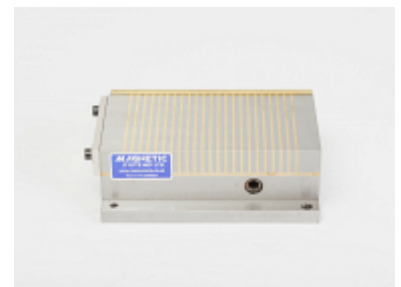
Overview

Using a magnetic base when marking ensures high quality, legible marks by preventing any unwanted movement of the workpiece. Simply switch the magnetic feature on or off to load and unload components. This machine accessory is ideal for use with aMarkmate, BenchDot, or BenchDot Deep Pneumatic.

The Magnetic Fixture features fine pole pitch, providing excellent workholding for both small or thin components as well as thicker or larger workpieces. This eliminates the need for two types of chuck.

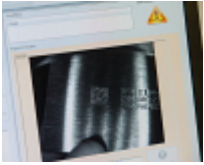
Manufactured from a solid piece of steel, the Magnetic Fixture provides excellent durability, strength and rigidity. This guarantees a stable working surface to enable accurate marking of parts throughout the lifetime of the base.

- Create high quality, legible marks
- Secures small or thin components as well as thicker or larger workpieces
- Prevent unwanted movement of the workpiece
- Simple to operate
- Compatible with the Pryor Markmate, BenchDot, or BenchDot Deep Pneumatic



- Traceability Software & Data Capture
- Automated Part Marking
- Aerospace Marking Standards
- Automotive VIN Marking
- Hand Tools for Marking & Identification
- Serial Number Marking
- Logo Marking
- Production Data Monitoring

Products and Solutions available from Pryor



Traceability Software &
Data Capture



Automated Part
Marking



Aerospace Marking
Standards



Automotive VIN
Marking



Hand Tools for Marking
& Identification



Serial Number
Marking



Logo Marking



Production Data
Monitoring