

Marking and Verification Station



Pryor's Marking and Verification Station is an all-in-one system for identifying components, verifying marks and data capture using machine vision. This system is ideal when identifying components with marks that must adhere to tight tolerances, as the mark quality is easily checked using the verification system installed in the machine. For this reason, it is widely used to create Data Matrix codes in the aerospace industry.

- All-in-one system for marking, verification and data capture
- Ensures that marks meet strict quality standards
- Widely used in the aerospace industry for marking Data Matrix codes

Overview

The Marking and Verification Station is an all-in-one solution, enabling you to identify a range of different components with high quality marks that comply with predetermined specifications.

This dot-peen marking machine has been built with a superior ball-screw mechanism that guarantees exceptional precision when creating marks that must comply with the toughest marking requirements. The machine also has an inbuilt motorised z-axis and Pryor's unique 'autosense' feature that automatically locates the optimal distance of the stylus from the work piece. This makes set-up extremely fast and accurate, ensuring consistent mark depth for every cycle.

Programmers can reduce operator error by designing and saving multiple marking layouts which the operator need only select when marking a component.

This system can also be set to match the requirements of numerous international standards, including aerospace standards: US Department of Defence (DOD) UID standards, Airline industry's (ATA, A4A) Spec 2000, AIM-DPM (Automatic Identification and Mobility association's standard on Direct Part Marking), SAE International's marking standard AS9132, JES131 and RRES90003. The verification feature checks for any quality escapes before they progress down the manufacturing value stream.

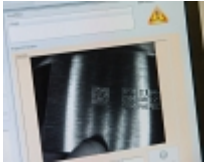
The Marking and Verification Station can mark a wide variety of parts as a range of additional accessories are available for this machine, including a Circumferential Marking Axis, a Magnetic Fixture, a T-slotted Table and Label Marking accessories.

Further options are available upon request, please contact us to discuss your requirements.

- Pryor's unique autosense feature positions the marking stylus marks at the optimal distance from the component, ensuring consistent depth of mark for every cycle
- Verification camera ensures that quality escapes are captured before they leave the station
- Reduced operator error by simple set up of pre-loaded layouts
- Can be set to match the requirements of many international part marking standards
- Wide range of compatible accessories available to secure your work piece to the machine for wobble, and thus quality escape, prevention
- Range of marking window sizes available for optimal marking of different sized layouts

- Traceability and Data Capture
- Automated Part Marking
- Aerospace Marking Standards
- Automotive VIN Marking
- Hand Tools for Marking and Identification
- Serial Number Marking
- Logo Marking
- Production Data Monitoring

Products and Solutions available from Pryor



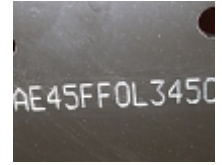
Traceability and Data
Capture



Automated Part
Marking



Aerospace Marking
Standards



Automotive VIN
Marking



Hand Tools for Marking
and Identification



Serial Number
Marking



Logo Marking



Production Data
Monitoring

Our Solutions

- Traceability and Data Capture
- Automated Part Marking
- Aerospace Marking Standards
- Automotive VIN Marking
- Hand Tools for Marking and Identification
- Serial Number Marking
- Logo Marking
- Production Data Monitoring