

BenchScribe



The Pryor Scribe Range of engraving machines engrave a continuous line inscription onto flat surfaces. This bench mounted version is ideal for marking low to medium volumes in a workshop environment. The excellent quality continuous line is the preferred method when marking fine characters as it creates the greatest legibility and is often used for VIN marking in the automotive industry.

- Engraves high quality continuous lines
- Ideal for low to medium volume production
- Preferred method for VIN marking
- Suitable for marking in a workshop environment

Overview

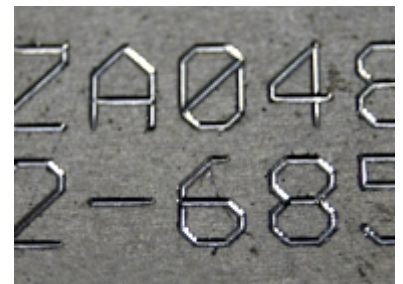
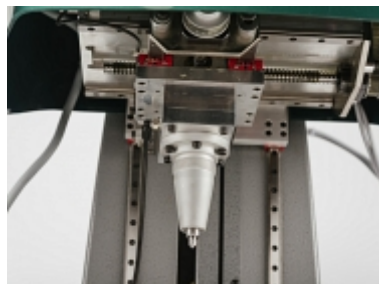
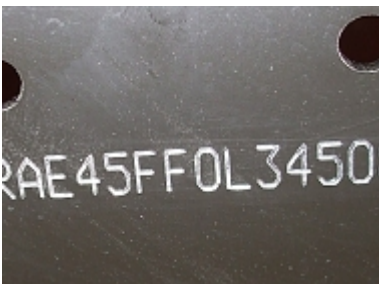
The BenchScribe Range provides excellent quality continuous line marks and is therefore ideal for logo marking, decorative marking and marking information with the highest levels of clarity and legibility. The BenchScribe ball screw mechanism ensures the highest levels of quality and precision which has made it the marker of choice for vehicle identification numbering (VIN marking).

The continuous line marker comes with 3 large marking window size options, providing a range of choices to fit each particular application. The marking depth is adjustable, enabling perfect marks to be inscribed onto different materials.

The diamond-tip stylus creates very intricate designs and is capable of marking harder materials.

The BenchScribe Range all have a motorised z axis for ease of set up and Riser Blocks are also available for particularly large or tall parts.

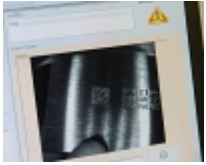
- Very low noise operations
- Excellent quality continuous line
- Greatest legibility
- Very large marking windows



Our Solutions

- Traceability and Data Capture
- Automated Part Marking
- Aerospace Marking Standards
- Automotive VIN Marking
- Hand Tools for Marking and Identification
- Serial Number Marking
- Logo Marking
- Production Data Monitoring

Products and Solutions available from Pryor



Traceability and Data
Capture



Automated Part
Marking



Aerospace Marking
Standards



Automotive VIN
Marking



Hand Tools for Marking
and Identification



Serial Number
Marking



Logo Marking



Production Data
Monitoring

Our Solutions

- Traceability and Data Capture
- Automated Part Marking
- Aerospace Marking Standards
- Automotive VIN Marking
- Hand Tools for Marking and Identification
- Serial Number Marking
- Logo Marking
- Production Data Monitoring