

Integrator Laser System



Pryor's Integrated Laser system provides a laser engraving machine that integrates into a production line or a turnkey laser marking cell. This is ideal for high volume and high variety applications, or for marking on the fly.

- Marks on a wide range of materials
- Can be integrated into a production line or a turnkey marking cell
- Ideal for high volume or high variety production
- Permanent marking
- Non contact marking
- Marking on the fly

Overview

Laser marking is one of the fastest forms of marking, which makes it ideal to integrate into high-speed production lines. The compact Integrator Laser is easy to install and can even be set up to mark on the fly.

This non-contact form of marking leaves minimal debris and bears no consumable costs. Because it is non-contact, the piece being marked does not require additional fixturing or clamping, saving crucial production time.

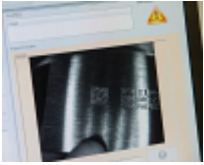
With easily changeable wavelengths and frequencies, the mark is also highly variable and the laser marking cell is ideal for flexible manufacturing.

- One of the fastest forms of Marking
- Highly Flexible
- Very reliable
- Low running costs
- No consumable costs



- Traceability Software & Data Capture
- Automated Part Marking
- Aerospace Marking Standards
- Automotive VIN Marking
- Hand Tools for Marking & Identification
- Serial Number Marking
- Logo Marking
- Production Data Monitoring

Products and Solutions available from Pryor



Traceability Software &
Data Capture



Automated Part
Marking



Aerospace Marking
Standards



Automotive VIN
Marking



Hand Tools for Marking
& Identification



Serial Number
Marking



Logo Marking



Production Data
Monitoring