

## Cabinet Laser



The Pryor Cabinet Laser is a bench mounted laser engraving machine. Laser engraving, otherwise known as laser etching or laser marking, offers a non-contact form of permanent marking. It is the fastest and most versatile marking system and is therefore suitable to high volume and high variety output. Our laser etching machines provide excellent precision on a wide range of materials.

- Non contact marking
- Permanent marking
- Fast and Versatile
- Suitable for high volume and high variety
- UL Listed Product

### Overview

Laser marking is faster than most other forms of permanent marking and capable of greater output and increased productivity. It can also create a more variable mark and produce designs and layouts on various materials that are more aesthetically pleasing.

The YF20Pro offers the greatest variability, more colours and more effects. The Pro also has a wider frequency which allows the machine to be utilised for deep, clean engraving with no need for after-treatment.

The Pryor Cabinet Laser is a Fibre laser which has proven to be the most reliable, meaning that you need not worry about downtime. It has very low running costs and is the most efficient on the market.

It is a non-contact marking system that does not create any stress points or deformation to the material being marked. It is an ideal solution when the shape of the part being marked is integral to its application. Unlike other marking systems where there is contact which may blunt the marking tool, the cabinet laser bears no consumable costs. Also, the part being marked does not need to be clamped or fixed to be secure so it is very safe, easy, and low cost to set up.

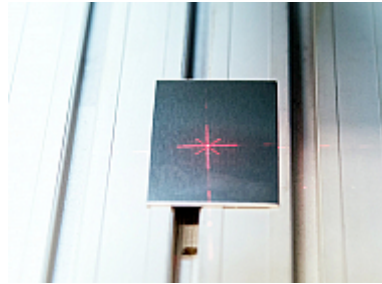
Pryor's cabinet laser has been designed with the user in mind and uniquely has a pilot beam, otherwise known as a focus finder, which allows the user to see exactly where the machine is set to mark, enabling fast and accurate setup by. Safety is also important, so the cabinet laser has an emergency STOP button and multiple key switch interlock system which make the system very easy to use. The user can also monitor the marking progress through a large viewing window. Pryor would recommend that you wear safety goggles whilst doing so.

Since August 2016, the Pryor 20W Standard Cabinet Laser has been recognised as an Underwriters Laboratories (UL) listed product, having completed an in-depth certification process. UL is a world leader in product safety testing and certification.

- No stress points or deformation to the material being marked
- No need for clamping - safe and easy to set up
- Minimal consumable costs
- Low running costs
- Highest levels of reliability

The Pryor cabinet laser is also used for surgical instrument marking, find more here

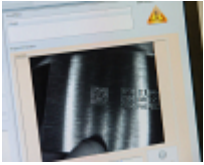
- Traceability Software & Data Capture
- Automated Part Marking
- Aerospace Marking Standards
- Automotive VIN Marking
- Hand Tools for Marking & Identification
- Serial Number Marking
- Logo Marking
- Production Data Monitoring



## Our Solutions

- Traceability Software & Data Capture
- Automated Part Marking
- Aerospace Marking Standards
- Automotive VIN Marking
- Hand Tools for Marking & Identification
- Serial Number Marking
- Logo Marking
- Production Data Monitoring

## Products and Solutions available from Pryor



Traceability Software &  
Data Capture



Automated Part  
Marking



Aerospace Marking  
Standards



Automotive VIN  
Marking



Hand Tools for Marking  
& Identification



Serial Number  
Marking



Logo Marking



Production Data  
Monitoring