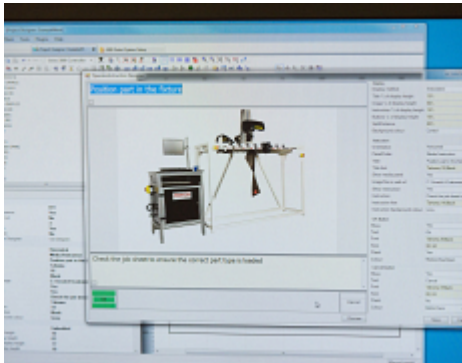


## Software - Production Management



Pryor offers an intuitive, easy to use software package for the operation of all of its marking and tracking machines. The Windows based interface has several key features which make it the market leading software product for managing permanent marking:

- Drag and drop editor with simple modification of marking parameters
- Customisable interface for simplified operation on the shop floor
- Password control to lock marking layouts and content
- Duplicate check for serial numbers and data marked to prevent remarking of unique identifiers

### Overview

Pryor's production management software has 3 key elements which make it a powerful tool for any production environment:

- Customise the operator interface
- Image and text instructions
- Password control of all features
- Push button start
- Automatic load of correct process instructions

#### Layout Designer

A drag and drop editor for the elements to be marked. All of the following can be inserted and edited at the click of a mouse:

- Data Matrix codes
- TrueType fonts
- Logos and images
- Serial numbers
  - automatically incrementing with each mark made
  - automatically generated within a given format
  - input from a database or production system
- Dates and date codes in the format of your choice
- Variable text/data from a barcode reader, dialogue box or other input
- 1D barcodes (laser and chemical etching products only)

#### Production Interface

The operator interface can be easily customised to give clear user instructions. Processes can be unique for different parts, loaded by the operator or barcode / automatic input.

- Step by step operating instructions
- Images for operator procedures

#### Our Solutions

- Traceability Software & Data Capture
- Automated Part Marking
- Aerospace Marking Standards
- Automotive VIN Marking
- Hand Tools for Marking & Identification
- Serial Number Marking
- Logo Marking
- Production Data Monitoring

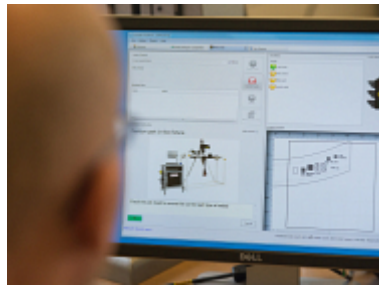
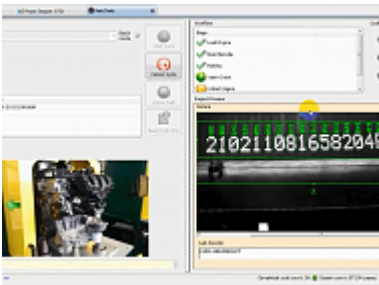
- Traffic light controls
- Drop down selections and operation trigger buttons
- Customisable operator instruction messages

## User Manager

To prevent misuse all features can be password protected individually, allowing operators and manufacturing engineers differing degrees of access and customisation control.

- Fully protect the system from uncontrolled process changes

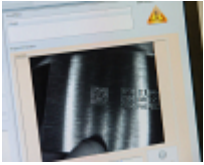
---  
Additionally, the software can be run from a central server allowing maximum control and flexibility for a manufacturing site - read more about this solution.



## Our Solutions

- Traceability Software & Data Capture
- Automated Part Marking
- Aerospace Marking Standards
- Automotive VIN Marking
- Hand Tools for Marking & Identification
- Serial Number Marking
- Logo Marking
- Production Data Monitoring

## Products and Solutions available from Pryor



Traceability Software &  
Data Capture



Automated Part  
Marking



Aerospace Marking  
Standards



Automotive VIN  
Marking



Hand Tools for Marking  
& Identification



Serial Number  
Marking



Logo Marking



Production Data  
Monitoring